

Which frame do I have?

This page will help you select your frame style from the following options:
 Seri Max STF 1.4, Seri Max STF 1.6, Newman MZX or Newman M3.

Select a frame by corner design:



Newman M3



Newman MZX



Seri Max STF 1.6



Seri Max STF 1.4

Select a frame by bolt size:

Newman M3

Use a 3/4" socket.

Newman MZX

Use a 5/8" socket.

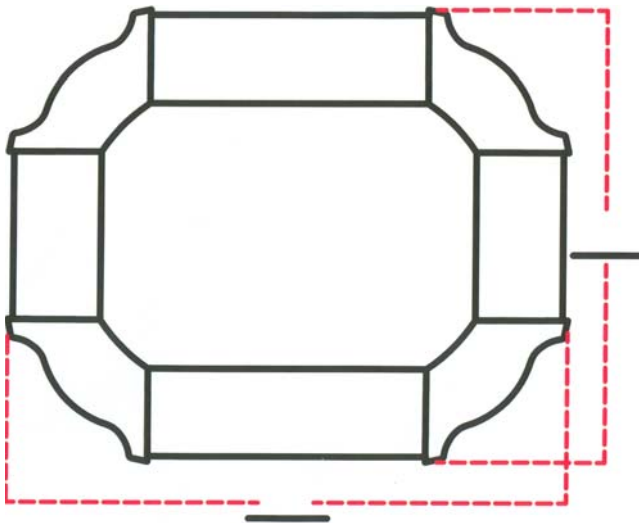
Seri Max STF 1.6

Use a 19mm socket.

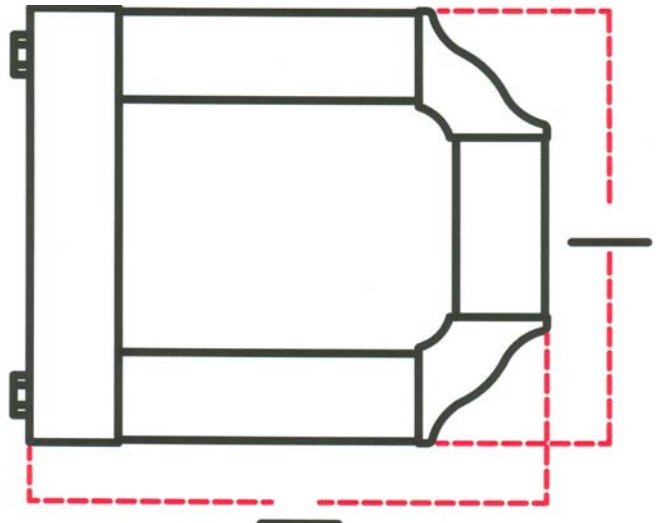
Seri Max STF 1.4

Use a 17mm socket.

How to measure your frame:



4 Roller Frames: If you have a frame with four rollers, measure from "ear" to "ear" on the corner assemblies from one side of the frame to the other and then repeat for the tubes on the opposite sides.



Square Bar Frames: If you have a square bar frame, measure from the top of the square bar to the "ear" on the corner assembly of the frame. Then measure from the "ear" on one side to the "ear" on the opposite tube.

For additional help with any shur-loc® product, please visit www.shur-loc.com!
 Your online source for everyday savings on shur-loc® products.

www.shur-loc.com – 360-568-8469 – fax 360-568-9486