

HOW TO MEASURE A FRAME

This page explains how to determine the differences in frame styles between the Newman™ MZX and M3, as well as the Serimax STF 1.4 and 1.6 frames. The measuring guide below also applies to Diamond Chase frames.

What does the corner of the frame look like?



Newman™ M3 Frame



Newman™ MZX Frame



Serimax 1.6 Frame



Serimax 1.4 Frame

What size socket is used to tighten the bolts on the frame?

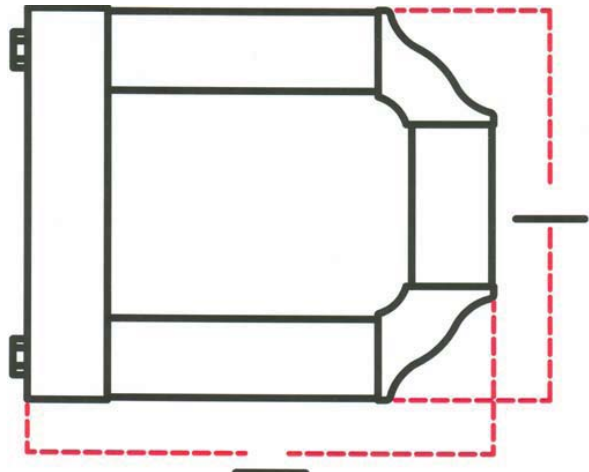
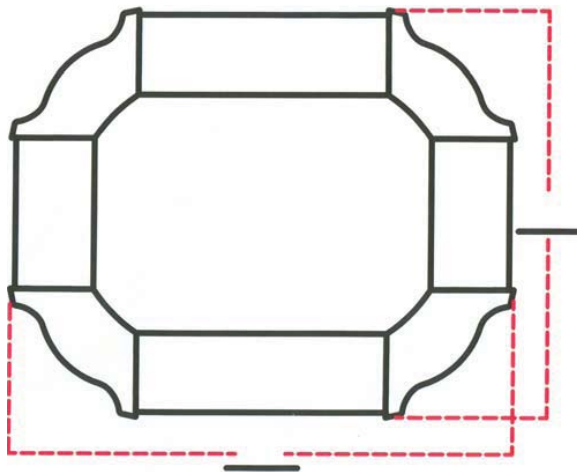
3/4" Socket
Newman™ M3 Frame

5/8" Socket
Newman™ MZX Frame

19mm Socket
STF 1.6 Frame
DC 1.6

17mm Socket
STF 1.4 Frame
DC 1.4

Where to measure the frame size:



4 Roller Frames: If you have a frame with four rollers, measure from “ear” to “ear” on the corner assemblies from one side of the frame to the other and then repeat for the tubes on the opposite sides.

Square Bar Frames: If you have a square bar frame, measure from the top of the square bar to the “ear” on the corner assembly of the frame. Then measure from the “ear” on one side to the “ear” on the opposite tube.

NOTE: The Newman™ 18x20 MZX and STF 1.4 Square Bar frames are measured by inside diameter. These are the only frames that are measured using this method.

For additional help with any shur-loc® product, please visit us online at www.shurloc.com or call us today.

360-805-4140 • www.shurloc.com • fax: 360-805-4141